



GAT MONTHLY MEMBERSHIP PROGRESS REPORT

Results as of: 4/30/2023

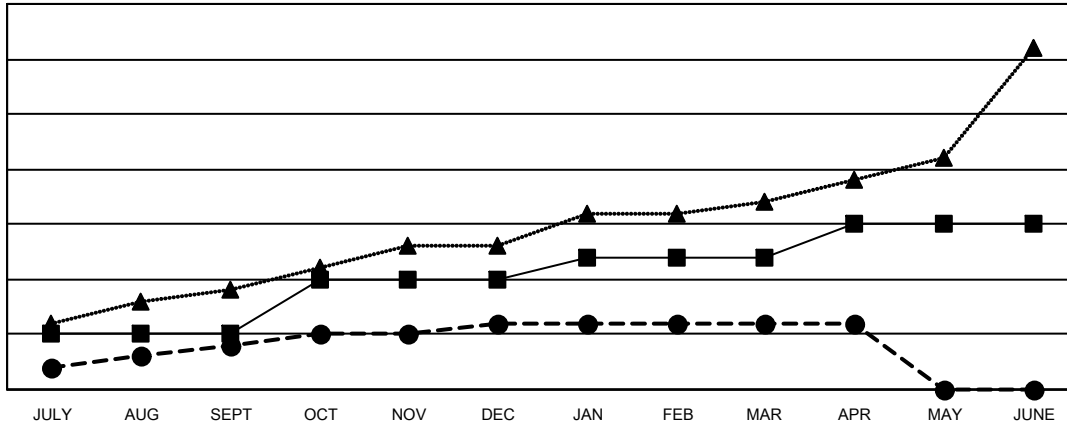
Multiple District 3231

LOCATION: INDIA

Clubs			
RESULTS FOR 2022-2023			
QUARTER	NEW CLUB GOAL	NEW CLUBS	DROPPED CLUBS
JULY/AUG/SEPT	5	4	1
OCT/NOV/DEC	5	2	6
JAN/FEB/MAR	2	0	31
APR/MAY/JUNE	3	0	0

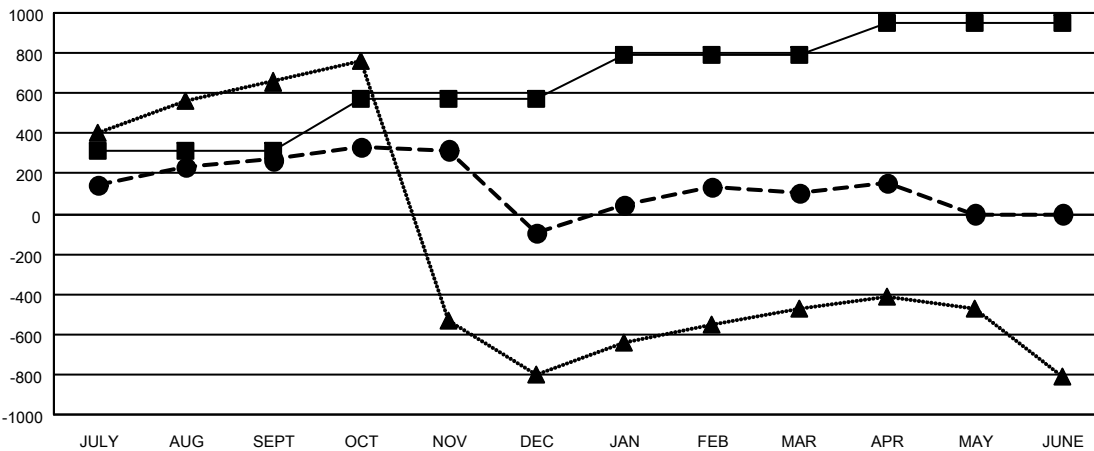
Members			
RESULTS FOR 2022-2023			
QUARTER	MEMBER GROWTH NET GOAL	MEMBER GROWTH ACTUAL	DROPPED MEMBERS ACTUAL (including transfers)
JULY/AUG/SEPT	315	519	214
OCT/NOV/DEC	260	199	533
JAN/FEB/MAR	215	503	189
APR/MAY/JUNE	160	88	38

GOALS AND ACTUAL NEW CLUBS CUMULATIVE



- CURRENT YEAR GOALS FOR NEW CLUBS
- CURRENT YEAR ACTUAL NEW CLUBS
- ▲- LAST YEAR ACTUAL NEW CLUBS

GOALS AND ACTUAL MEMBERS CUMULATIVE



- MEMBER GROWTH NET GOAL
- MEMBER GROWTH ACTUAL
- ▲- LAST YEAR MEMBERSHIP ACTUAL

DROPPED CLUBS: 38	157 CLUBS OF 331 ADDED 1 OR MORE NEW MEMBERS	GENDER DISTRIBUTION
DROPPED MEMBERS	CLICK HERE FOR CUMULATIVE MEMBERSHIP DATA	MALE 6,778 (60.39%)
DECEASED 43		FEMALE 4,445 (39.60%)
CLUB CANCELLED 169		NON BINARY 0 (0.00%)
OTHER 762		PREFER NOT TO ANSWER 1 (0.01%)
TOTAL 974		TOTAL FAMILY UNIT MEMBERS 6,211
		FAMILY MEMBERS PAYING HALF DUES 3,358